

2023 GMC

TERRAIN



GMC

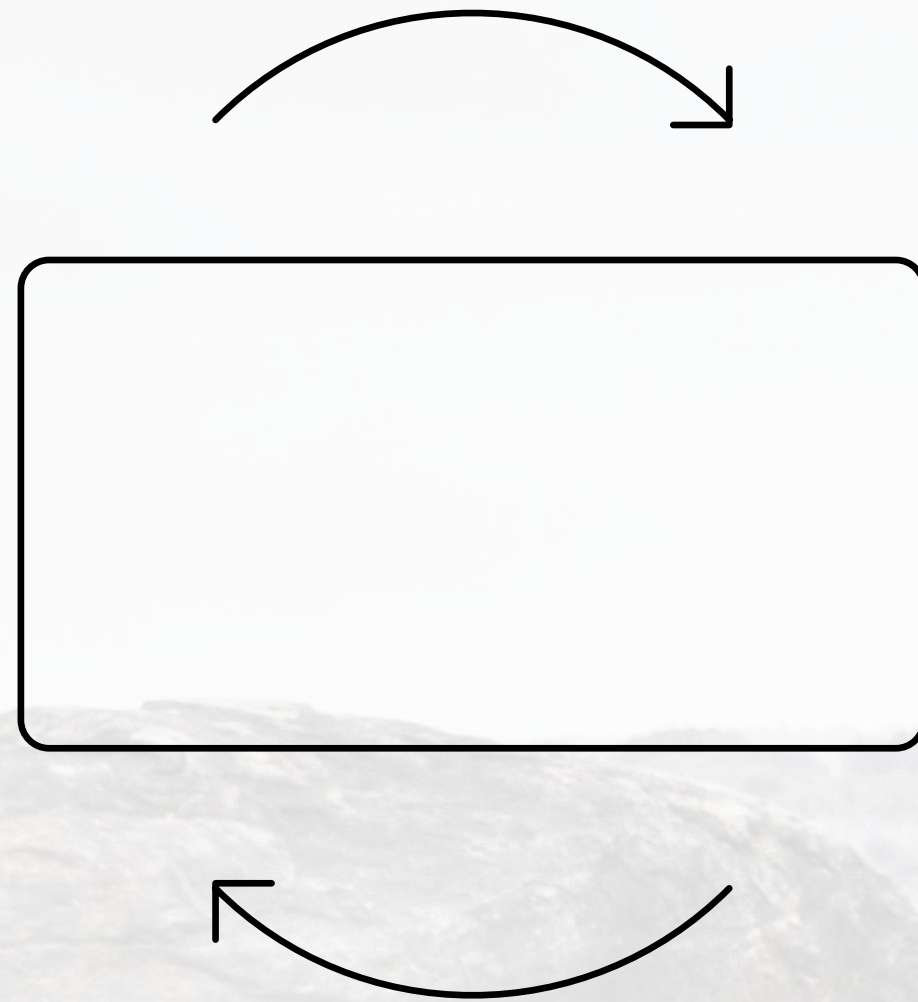
NAVIGATION GUIDE

3

CLICK THE HOME BUTTON TO RETURN TO THE TABLE OF CONTENTS.



1



ROTATE FOR A BETTER VIEWING EXPERIENCE.



2

CLICK ON UNDERLINED TEXT TO REVEAL IMPORTANT LEGAL INFORMATION.

— USB Ports¹



4

CLICK THE X TO CLOSE DISCLOSURES.

¹Not compatible with all devices.



TERRAIN CONTENTS

CLICK ANY TITLE TO EXPLORE A SPECIFIC CHAPTER.

3

INTRODUCTION

18

ELEVATION EDITION

28

CONNECTIVITY

35

ACCESSORIES

6

DENALI

20

SAFETY AND
TECHNOLOGY

32

EXTERIOR COLORS

39

IMPORTANT WORDS
AND LEGAL DISCLOSURES

12

AT4

24

CAPABILITY

33

INTERIOR COLORS
AND TEXTURES

16

SLE AND SLT

26

VERSATILITY

34

WHEELS



MEET THE 2023 GMC TERRAIN

Impressive on every level, the Terrain compact SUV is perfectly equipped for the way you live—and the places you're heading.





PREMIUM, CAPABLE AND READY FOR YOUR LIFE

Get the most out of every day in the
stylish 2023 Terrain.



WHEREVER LIFE LEADS, THERE'S A TERRAIN TO TAKE YOU THERE



SLT shown.

Terrain SLE and SLT stand out from the crowd with striking design and turbocharged capability.



Terrain AT4 is confidently capable and ready to get you into the heart of the action.



Terrain Denali is premium in every way. It is the embodiment of Terrain's true potential.



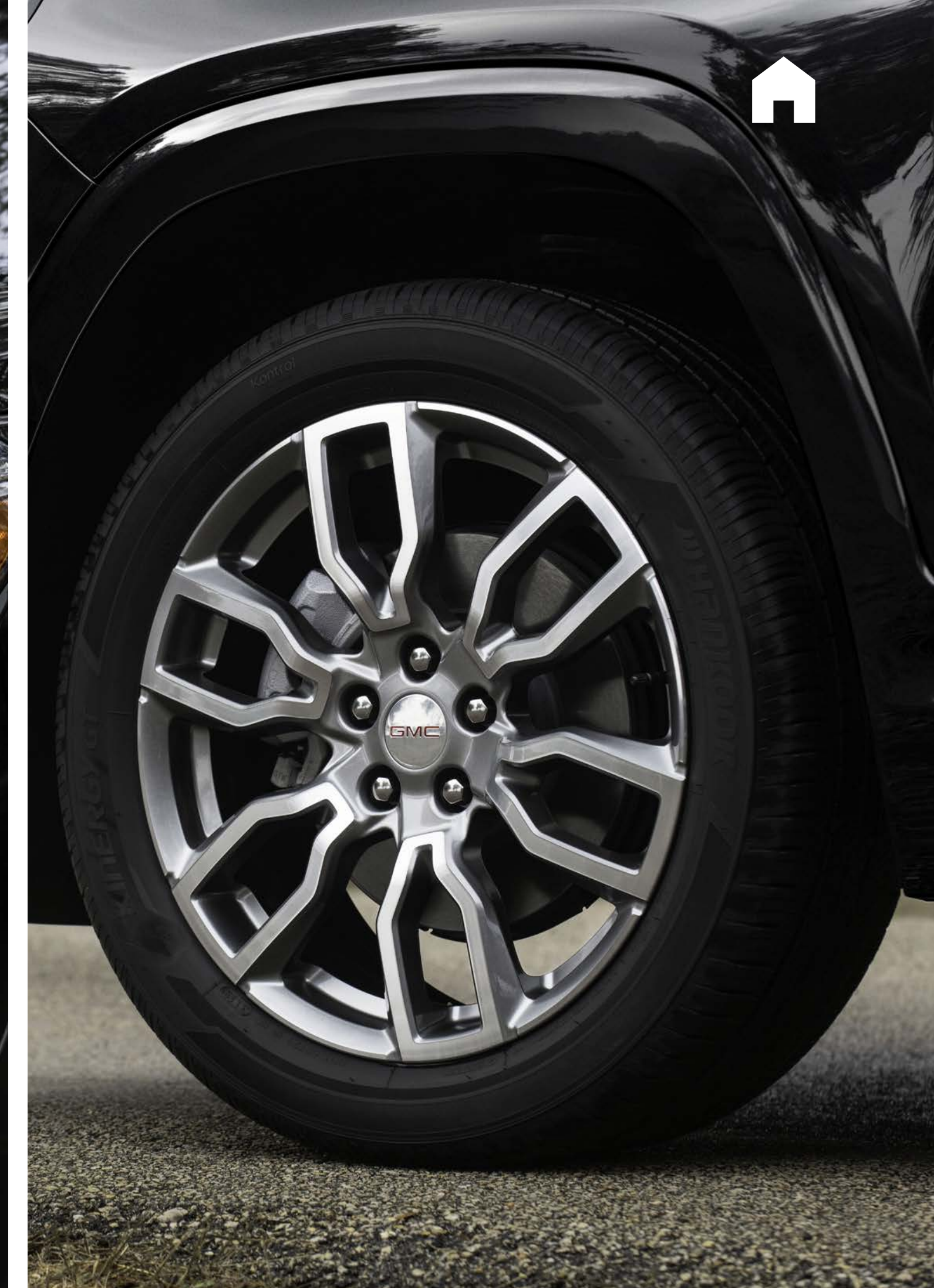
TERRAIN DENALI: THE NEXT LEVEL OF PREMIUM AND CAPABLE

Signature Denali style and performance take Terrain to the next level, exceeding even the highest expectations.



NOW YOU'VE TRULY ARRIVED

- Denali-Exclusive Multidimensional Grille
- LED Headlamps With GMC Signature C-Shape Design
- 19" Machined Aluminum Wheels With Premium Gray Painted Accents
- Ultra-Bright Roof Rails
- Chrome Accents



DENALI





THE TECH YOU NEED

Get the most from every drive with features such as:

- GMC Pro Safety Plus¹
- Front Park Assist²
- Head-Up Display
- 8" Diagonal Driver Information Center
- Wireless Charging³





GMC PRO SAFETY PLUS

INCLUDES ALL GMC PRO SAFETY¹ FEATURES PLUS:

- Lane Change Alert With Side Blind Zone Alert
- Rear Cross Traffic Alert
- Rear Park Assist

GMC Pro Safety Plus is standard on Denali.

Safety or driver-assistance features are no substitute for the driver's responsibility to operate the vehicle in a safe manner. The driver should remain attentive to traffic, surroundings and road conditions at all times. Visibility, weather and road conditions may affect feature performance. Read the vehicle Owner's Manual for more important feature limitations and information.

Discover more of Terrain's safety technologies
at gmc.com/terrain/safety.





Terrain's Denali-exclusive interior is crafted with meticulous attention to detail and quality materials for a stylishly luxurious driving experience.



SETTLE IN, BUT NEVER SETTLE



DENALI

TERRAIN DENALI FEATURES:

- Heated Steering Wheel
- Heated Front Seats
- Authentic Aluminum Trim
- Soft-Touch Instrument Panel
- Bose® Premium Seven-Speaker Audio System
- Ventilated Leather-Appointed Front Seats Are Available
- Heated Second-Row Outboard Seats Are Available



GO WHERE THE ACTION IS IN TERRAIN AT4



AT4

Take on the day in the rugged and ready, boldly styled Terrain AT4.



GO BEYOND

Take it on with capability features such as:

- Goodyear® Sport Terrain Tires
- Front Steel Skid Plate
- Traction Select System With Off-Road Mode
- Hill Descent Control



INTUITIVE TECHNOLOGY

Stay connected and informed thanks to these technology features:

- Wireless Apple CarPlay® Compatibility¹
- Wireless Android Auto™ Compatibility²
- Amazon Alexa Built-in³ Is Available
- Head-Up Display Is Available
- High Definition Surround Vision⁴ Is Available





Stand out anywhere the action takes you with distinctive design features such as:

- AT4 Grille and Badging
- LED Headlamps and Taillamps
- AT4-Embroidered Front Head Restraints
- Heated Steering Wheel
- Heated Front Seats
- Unique 17" Gloss-Black Painted Aluminum Wheels
- Leather-Appointed Front-Row Seats With Unique Accents
- Leather-Appointed Second-Row Outboard Seats



TERRAIN SLE AND SLT

Capability, premium appointments and eye-catching good looks come together in perfect harmony.



REIMAGINE WHAT A COMPACT SUV HAS TO OFFER

Next-level driver comfort and available tech elevate your driving experience.

TERRAIN SLE AND SLT

- GMC Pro Safety¹
- Traction Select System
- Fold-Flat Seats
- Wireless Apple CarPlay® Compatibility²
- Wireless Android Auto Compatibility³
- Terrain Pro Safety Plus⁴ Is Available
- Heated Front Seats and Heated Steering Wheel Are Available
- High Definition Rear Vision Camera⁵ Is Available





TERRAIN ELEVATION EDITION

Terrain Elevation Edition's dynamic presence announces that something truly unique has arrived.



STRIKING DETAILS

ELEVATION EDITION AVAILABLE ON TERRAIN SLE AND TERRAIN SLT

- 19" Gloss-Black Painted Aluminum Wheels
- Darkened Front Grille
- Black Roof Side Rails
- Black GMC Center Caps With Red GMC Lettering
- Black Exterior Accents
- Black Mirror Caps and Black Exterior Badging





GET THERE WITH CONFIDENCE

Travel with confidence thanks to Terrain's available advanced safety and driver-assistance features.





GMC PRO SAFETY

HELP ENHANCE YOUR AWARENESS WITH SAFETY AND DRIVER-ASSISTANCE TECHNOLOGIES:

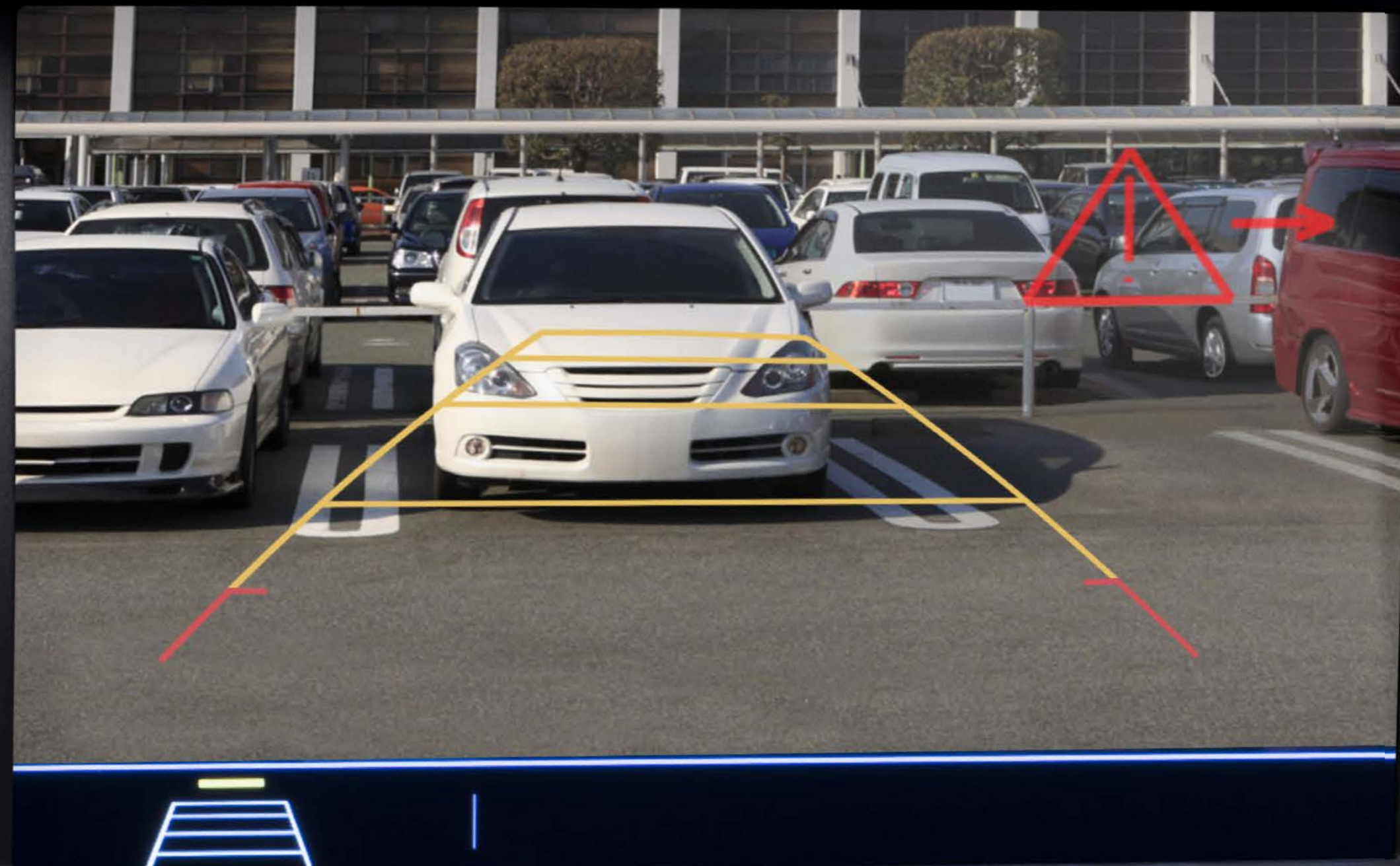
- Automatic Emergency Braking
- Forward Collision Alert
- Lane Keep Assist With Lane Departure Warning
- Following Distance Indicator
- Front Pedestrian Braking
- IntelliBeam—Auto High Beams

Safety or driver-assistance features are no substitute for the driver's responsibility to operate the vehicle in a safe manner. The driver should remain attentive to traffic, surroundings and road conditions at all times. Visibility, weather and road conditions may affect feature performance. Read the vehicle Owner's Manual for more important feature limitations and information.

Discover more of Terrain's safety technologies at gmc.com/terrain/safety.



MORE TERRAIN SAFETY TECHNOLOGY



TERRAIN PRO SAFETY PLUS INCLUDES ALL STANDARD GMC PRO SAFETY FEATURES PLUS:

- Adaptive Cruise Control
- Safety Alert Seat
- Rear Park Assist

Available on SLE, SLT and AT4.

TERRAIN MODELS WITH TERRAIN PRO SAFETY PLUS CAN ALSO OPT FOR THIS PACKAGE:

- Lane Change Alert With Side Blind Zone Alert
- Rear Cross Traffic Alert

Available on SLE, SLT and AT4.

Safety or driver-assistance features are no substitute for the driver's responsibility to operate the vehicle in a safe manner. The driver should remain attentive to traffic, surroundings and road conditions at all times. Visibility, weather and road conditions may affect feature performance. Read the vehicle Owner's Manual for more important feature limitations and information.

Discover more of Terrain's safety technologies at gmc.com/terrain/safety.



STAY CONNECTED WITH WHERE YOU'RE HEADED NEXT



Terrain keeps you and your companions connected, informed and entertained.

- Bluetooth^{®1} Connectivity
- Head-Up Display Is Available
- Amazon Alexa Built-in² Is Available

- Connected Navigation³ With Real-Time Updates on Traffic, Road Closures and Points of Interest Is Available
- Wi-Fi[®] Hotspot⁴ Is Available
- Up to Six USB Ports⁵ Are Available



MAKE EVERY ROAD A ROAD WELL-TRAVELED

TERRAIN OFFERS:

- Smooth-Shifting 9-Speed Automatic Transmission
- Traction Select System Allows You to Make Real-Time Adjustments for Optimal Capability as Driving Conditions Change
- Snow Mode, Included on FWD Models, Lessens the Chance of Wheel Slippage in Low-Traction Driving Conditions
- Off-Road Mode Adjusts the AWD System, Traction Control and Stability Control to Improve Traction and Driving Dynamics on Dirt, Gravel or Sand
- FWD Mode Optimizes Fuel Economy¹ in Everyday Driving Conditions
- Terrain Denali Features a Premium Suspension With Enhanced Shock Control to Help Provide a Refined Ride on Rough Roads





HIGHLY CAPABLE

1.5L TURBO

— 175 hp/203 lb-ft of Torque

HILL DESCENT CONTROL

— Helps Provide a Smooth, Controlled Descent Over Uneven Surfaces

TRACTION SELECT SYSTEM

— With up to Three Modes to Help Master the Conditions



ROOM FOR YOUR LIFE

Terrain offers an available hands-free programmable power liftgate with LED logo projection.





ALL DOWN



SECOND ROW DOWN



BACK-LEFT SEAT DOWN

Terrain comfortably accommodates up to five people and easily allows you to maximize cargo space.

- Fold-Flat Front-Passenger Seat
- 60/40 Split-Folding Second-Row Seats

- Fold-Flat Seats Accommodate Objects up to 8 Feet Long¹



KEEP YOUR CONNECTIONS STRONG

Three years of the OnStar® and Connected Services Premium Plan¹ are included on select Terrain models. With this plan, eligible vehicles² can enjoy the added peace of mind of the OnStar Safety & Security Plan³ and the complete suite of available connectivity features included in the Connected Vehicle Plan.⁴

ONSTAR AND CONNECTED SERVICES PREMIUM PLAN INCLUDES:

- In-Vehicle App⁵ Access
- In-Vehicle Wi-Fi® Hotspot Data⁶
- OnStar Guardian™ app⁷
- myGMC Mobile App⁸
- Automatic Crash Response⁹
- Emergency Services
- Crisis Assist
- Roadside Assistance¹⁰
- Stolen Vehicle Assistance¹¹
- Alexa Built-in¹²





HELP WHEN YOU NEED IT

With 3 years¹ of OnStar Safety and Security, you'll have added peace of mind knowing an Emergency-Certified Advisor² is ready to help. Whether it's a crash, a vehicle theft or an emergency situation, help is available 24/7.

The Safety & Security Plan³ includes the OnStar Guardian app⁴, which lets you access the key OnStar safety services you depend on right from your phone. Help in a crash, assistance with a flat tire and more are available through your smartphone. Best of all, you can share OnStar Guardian with up to seven of your loved ones at no additional cost.



STAY IN COMMAND WHEREVER THE ACTION LEADS

- Wireless Apple CarPlay® Compatibility¹
- Wireless Android Auto Compatibility²
- GMC Infotainment System³ With Navigation⁴ Is Available
- Bose Premium Seven-Speaker Audio System Is Available
- Wireless Charging⁵ Is Available





EXPLORE MORE, ALEXA'S ON BOARD

Alexa functionality is integrated into your GMC Infotainment System.¹ With available Amazon Alexa Built-in,² you can ask Alexa to stream your favorite music services such as Spotify^{®3} or Amazon Music, get directions, make calls, change your radio station and get routes to the nearest dealership—on the go. Alexa can also make shopping lists, play and resume audiobooks and get the score to last night's game.



FIND YOUR TRUE COLORS



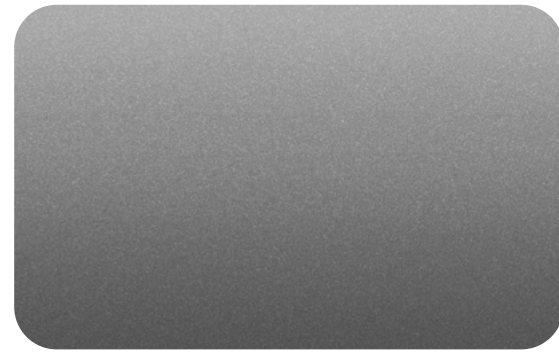
SUMMIT
WHITE



WHITE FROST
TRICOAT^{1,2}



DESERT SAND
METALLIC^{1,3}



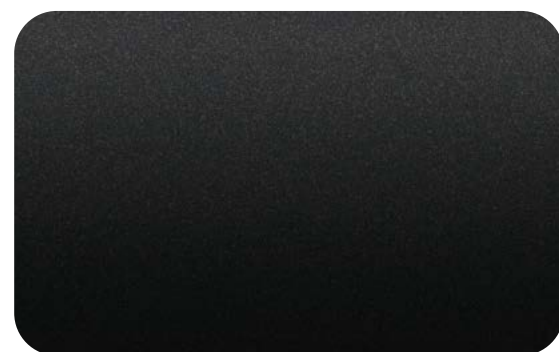
STERLING
METALLIC¹



VOLCANIC RED
TINTCOAT¹



DEEP BRONZE
METALLIC^{1,4}



EBONY TWILIGHT
METALLIC¹



MARINE
METALLIC^{1,5}

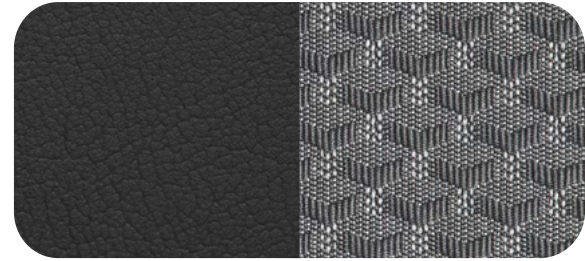


See your GMC dealer or gmc.com for more exterior color details.

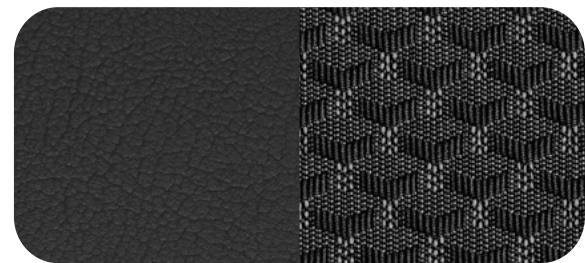
Denali shown in Ebony Twilight Metallic.



SLE



JET BLACK/MEDIUM
ASH GRAY CLOTH



JET BLACK/
JET BLACK CLOTH

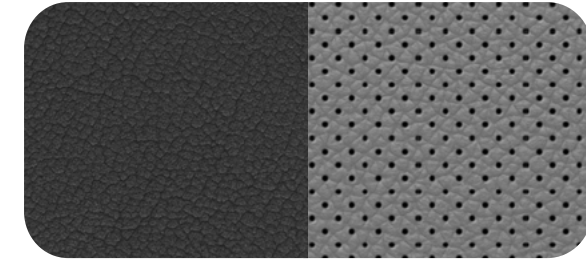


LUXURY BROWN
WOOD TONE

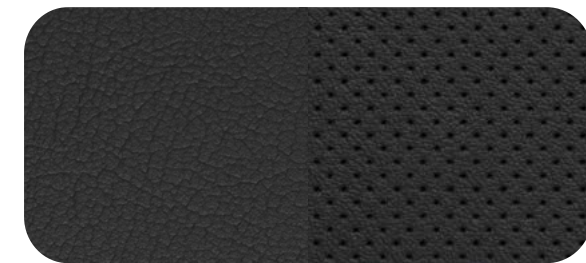


AXIOM ALUMINUM

SLT



JET BLACK/MEDIUM
ASH GRAY PERFORATED
LEATHER-APPOINTED



JET BLACK/
JET BLACK PERFORATED
LEATHER-APPOINTED

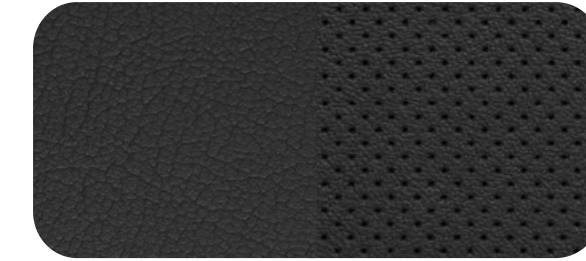


LUXURY BROWN
WOOD TONE



AXIOM ALUMINUM

AT4



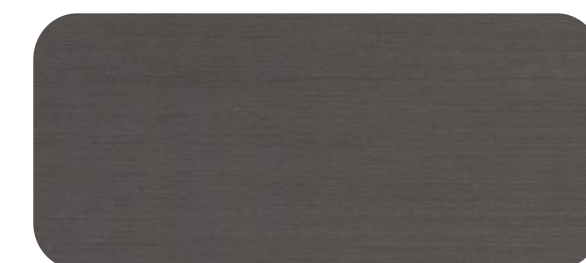
JET BLACK/JET BLACK
PERFORATED LEATHER-APPOINTED



AXINITE APPLIQUÉ



COMBAT ALUMINUM

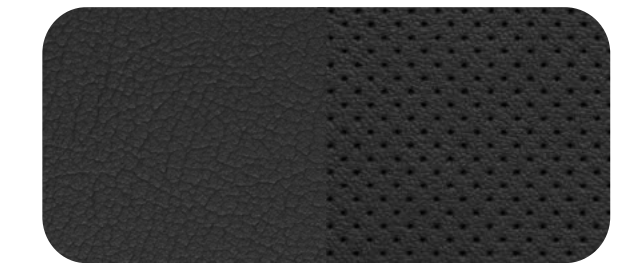


DARK ALUMINUM

DENALI



DARK GALVANIZED/
LIGHT PLATINUM PERFORATED
LEATHER-APPOINTED



JET BLACK/
JET BLACK PERFORATED
LEATHER-APPOINTED



SKYLINE TIMBER
WOOD TONE



BURNISHED ALUMINUM



PRECISION-CRAFTED FROM THE GROUND UP



17"

17" SILVER PAINTED ALUMINUM (RSB)
Standard on SLE



17"

17" GLOSS-BLACK PAINTED ALUMINUM (PJE)
Standard on AT4



18"

18" SILVER PAINTED ALUMINUM (RSX)
Standard on SLT



19"

19" GLOSS-BLACK PAINTED ALUMINUM (PJI) Standard on Elevation Edition



19"

19" MACHINED ALUMINUM WITH GRAY PAINTED ACCENTS (PJH)
Available on SLT



19"

19" MACHINED ALUMINUM WITH PREMIUM GRAY PAINTED ACCENTS (RT7)
Standard on Denali



19"

19" PAINTED ALUMINUM WITH AFTER MIDNIGHT FINISH (PJO)
Standard on Black Diamond Edition



PERSONALIZE YOUR TERRAIN—INSIDE AND OUT

GMC Accessories are a great way to personalize your Terrain—inside and out. They're designed and engineered to meet the Professional Grade standards of your Terrain, as well as your own.

We also offer accessories from a lineup of other renowned and proven manufacturers.

Find a full selection of Terrain accessories at gmc.com/accessories.





**VERTICAL CARGO NET
WITH STORAGE BAG**



**FIRST-ROW PREMIUM
ALL-WEATHER FLOOR LINERS**



**ROOF RACK CROSSRAILS
WITH THULE® BIKE CARRIER**



INTEGRATED CARGO AREA LINER



Find a full selection of Terrain accessories at gmc.com/accessories.



POWERED BY PROFESSIONAL GRADE



SIERRA 1500



CANYON



SIERRA HEAVY DUTY



HUMMER EV PICKUP



YUKON



TERRAIN



ACADIA

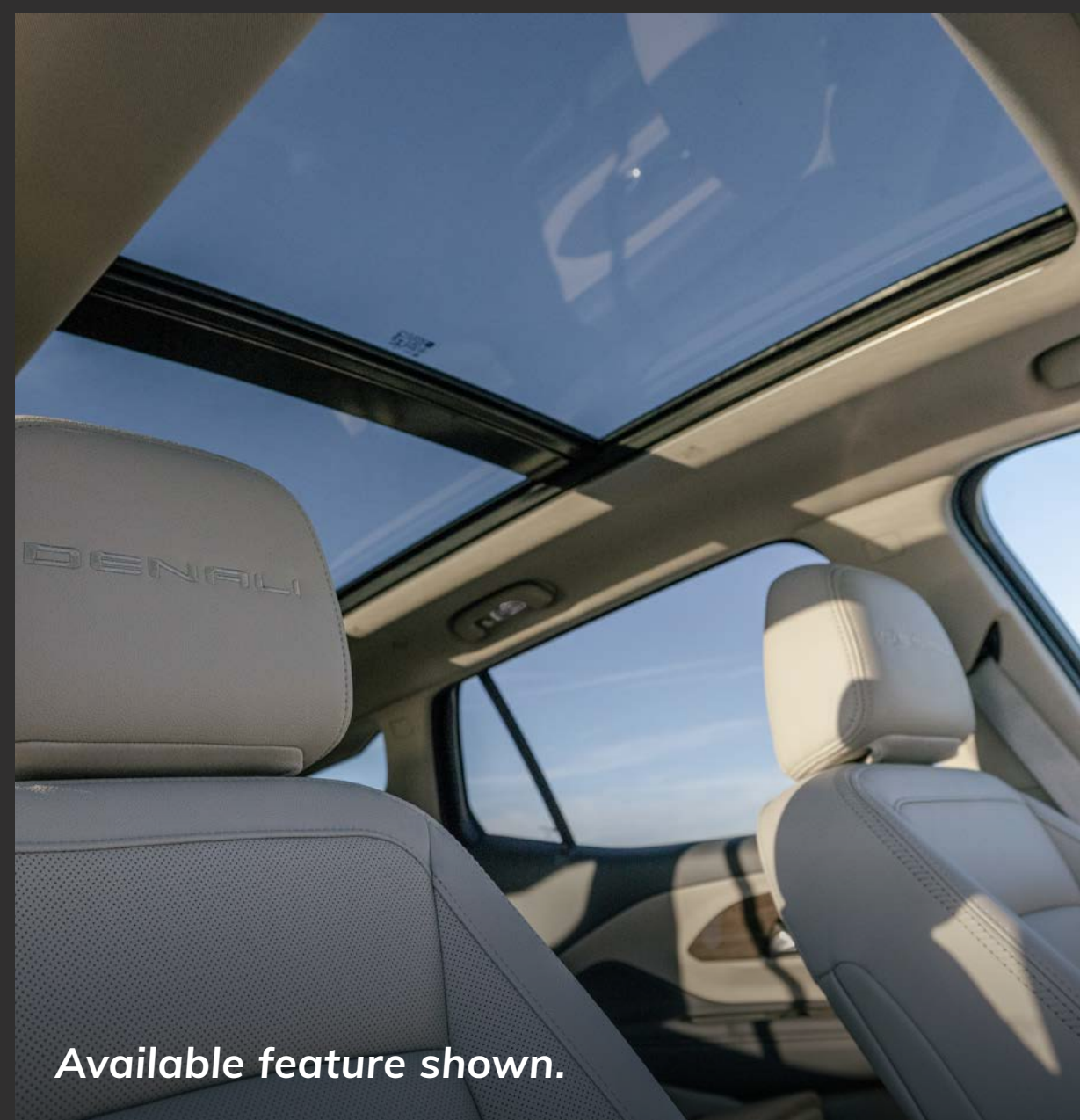
Due to current supply-chain shortages, certain features shown have limited or late availability, or are no longer available. See the window label or a dealer regarding the features on an individual vehicle. Sierra 1500 AT4X shown with available accessories. Canyon AT4X shown available spring 2023. Reservations for HUMMER EV are currently full.

DRIVE THE CONVERSATION

#GMCTERRAIN | #DENALI | #AT4



Share your GMC experience and get in on the action.





IMPORTANT WORDS AND LEGAL DISCLOSURES



NEW VEHICLE LIMITED WARRANTY

3-YEAR/36,000-MILE BUMPER-TO-BUMPER LIMITED WARRANTY GMC will warrant each 2023 Terrain from bumper to bumper for 3 years/36,000 miles (whichever comes first; see dealer for details), with no deductible, from the original in-service date of the vehicle, for warrantable repairs that are required as a result of defects due to materials and/or workmanship. Cosmetic corrosion resulting from defects is also covered under the Bumper-to-Bumper Limited Warranty. In addition, rust-through corrosion will be covered for 6 years/100,000 miles (whichever comes first; see dealer for details).

POWERTRAIN LIMITED WARRANTY Every 2023 GMC Terrain comes with a 5-year/60,000-mile (whichever comes first) transferable Powertrain Limited Warranty. 24/7 Roadside Assistance and Courtesy Transportation are also offered for the duration of the Powertrain Limited Warranty. Please see your GMC dealer for details.

ONSTAR AND GMC CONNECTED SERVICES

Connected vehicle services vary by vehicle model and require working electrical system, cell reception and GPS signal. Requires active service plan. OnStar links to emergency services. See onstar.com for details and limitations.

GMC CERTIFIED SERVICE

To help your Terrain live up to its performance promise, GMC Certified Service—found exclusively at your GMC dealer—is there. With all the engineering excellence in Terrain, GM-trained technicians have the expertise to help care for it.

ADDITIONAL NOTES

A NOTE ON CHILD SAFETY Always use seat belts and the correct child restraint for your child's age and size, even with airbags. Even in vehicles equipped with the Passenger Sensing System, children are safer when properly secured in a rear seat in the appropriate infant, child or booster seat. Never place a rear-facing infant restraint in the front seat of any vehicle equipped with an active frontal airbag. See the Owner's Manual and the child safety seat instructions for more safety information.

TRAILERING AND OFF-ROAD DRIVING INFORMATION Please go to gmc.com and carefully review the vehicle Owner's Manual for important safety information about trailering or off-road driving in your vehicle.

FLEET ORDERS Some standard content may be deleted on fleet orders. See dealer for details.

ENGINES GMC products are equipped with engines produced by GM Powertrain or other suppliers to GM worldwide. The engines in GMC products may also be used in other GM makes and models.

GMC.COM See more of Terrain on our website: gmc.com/terrain. More photos and information; hot links to related subjects; convenient dealer locator; pricing guide; spec out your own vehicle. Or call 1-800-GMC-8782.

IMPORTANT WORDS ABOUT THIS CATALOG We have tried to make this catalog comprehensive and factual. We reserve the right, however, to make changes at any time, without notice, in prices, colors, materials, equipment, specifications, models and availability. Specifications, dimensions, measurements, ratings and other numbers in this catalog and other printed materials provided at the dealership or affixed to vehicles are approximations based on design and engineering drawings, prototypes and laboratory tests. Your vehicle may differ due to variations in manufacture and equipment. Since some information may have been updated since the time of publication, please check with your GMC dealer for complete details. GMC reserves the right to lengthen or shorten the model year for any product for any reason or to start and end model years at different times. Certain vehicle features may lose their usefulness over time due to obsolescence from technological changes. Unless otherwise noted, all claims based on GM Compact SUV segment and latest available competitive information available at time of publication. Excludes other GM vehicles.

AN IMPORTANT NOTE ABOUT ALTERATIONS AND WARRANTIES Installations or alterations to the original equipment vehicle (or chassis) as distributed by General Motors are not covered by the General Motors New Vehicle Limited Warranty. The special body company, assembler, equipment installer or upfitter is solely responsible for warranties on the body or equipment and any alterations (or any effect of the alterations) to any of the parts, components, systems or assemblies installed by GM. General Motors is not responsible for the safety or quality of design, features, materials or workmanship of any alterations by such employers.

ASSEMBLY GMC vehicles and their components are assembled or produced by different operating units of General Motors, its subsidiaries or suppliers to GM worldwide. We sometimes find it necessary to produce GMC vehicles with different or differently sourced components than originally scheduled. Since some options may be unavailable when your vehicle is assembled, we suggest you verify that your vehicle includes the equipment you ordered and that, if there were changes, they are acceptable to you.

GMMOBILITY.COM (1-800-323-9935) GM Mobility offers financial assistance for eligible adaptive equipment to make automotive travel easier for persons with disabilities or special transportation needs. To learn more about special GM Mobility offers, visit gmmobility.com.

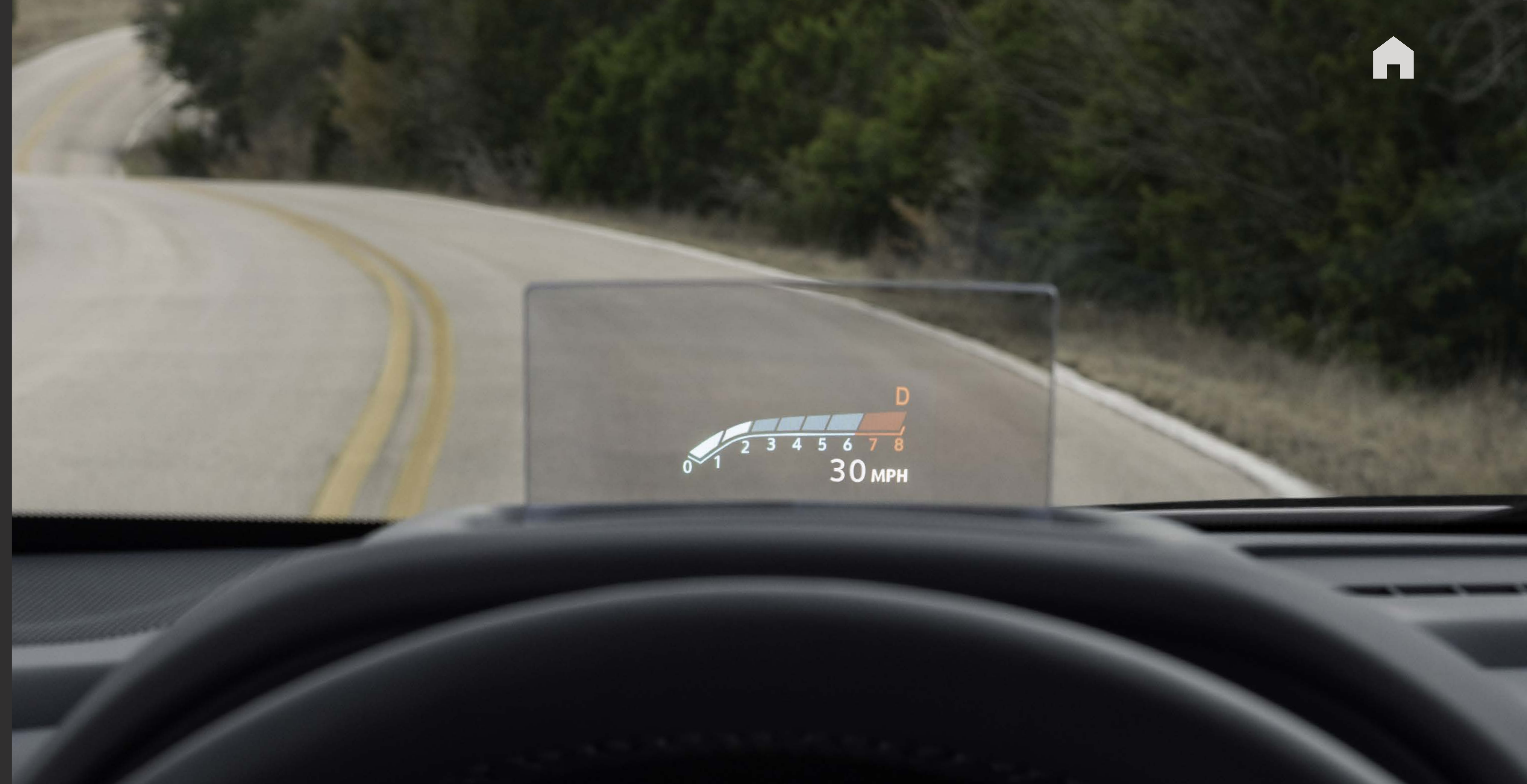
©2022 General Motors. All rights reserved. GM, the GM logo, GMC, the slogans, emblems, vehicle model names, vehicle body designs and other marks appearing in this catalog are the trademarks and/or service marks of General Motors, its subsidiaries, affiliates or licensors. Facebook is a registered trademark of Meta Platforms, Inc. Twitter is a registered trademark of Twitter, Inc. Instagram is a registered trademark of Instagram, LLC. Sirius, XM and all related marks and logos are trademarks of SiriusXM Radio, Inc. Google, Android, YouTube, Android Auto and other marks are trademarks of Google LLC. Apple, CarPlay, iPhone and Siri are registered trademarks of Apple, Inc.



THE TECH YOU NEED

Get the most from every drive with features such as:

- GMC Pro Safety Plus¹
- Front Park Assist²
- Head-Up Display
- 8" Diagonal Driver Information Center
- Wireless Charging³



¹GMC Pro Safety Plus: Automatic Emergency Braking, Lane Keep Assist with Lane Departure Warning, Forward Collision Alert, Front Pedestrian Braking, Following Distance Indicator, IntelliBeam, Lane Change Alert with Side Blind Zone Alert, Rear Cross Traffic Alert and Rear Park Assist. Safety or driver-assistance features are no substitute for the driver's responsibility to operate the vehicle in a safe manner. Read the vehicle Owner's Manual for important feature limitations and information. ²Safety or driver-assistance features are no substitute for the driver's responsibility to operate the vehicle in a safe manner. Read the vehicle Owner's Manual for important feature limitations and information. ³The system wirelessly charges one compatible mobile device. Some phones have built-in wireless charging technology and others require a special adapter/back cover. To check for phone or other device compatibility, see my.gmc.com/learn or consult your carrier.





GMC PRO SAFETY PLUS

INCLUDES ALL GMC PRO SAFETY¹ FEATURES PLUS:

- Lane Change Alert With Side Blind Zone Alert
- Rear Cross Traffic Alert
- Rear Park Assist

GMC Pro Safety Plus is standard on Denali.

Safety or driver-assistance features are no substitute for the driver's responsibility to operate the vehicle in a safe manner. The driver should remain attentive to traffic, surroundings and road conditions at all times. Visibility, weather and road conditions may affect feature performance. Read the vehicle Owner's Manual for more important feature limitations and information.

Discover more of Terrain's safety technologies at gmc.com/terrain/safety.



¹GMC Pro Safety: Automatic Emergency Braking, Lane Keep Assist with Lane Departure Warning, Forward Collision Alert, Front Pedestrian Braking, Following Distance Indicator and IntelliBeam. Safety or driver-assistance features are no substitute for the driver's responsibility to operate the vehicle in a safe manner. Read the vehicle Owner's Manual for important feature limitations and information.





INTUITIVE TECHNOLOGY

Stay connected and informed thanks to these technology features:

- Wireless Apple CarPlay® [Compatibility](#)¹
- Wireless Android Auto™ [Compatibility](#)²
- Amazon Alexa [Built-in](#)³ Is Available
- Head-Up Display Is Available
- High Definition Surround [Vision](#)⁴ Is Available



¹Vehicle user interface is a product of Apple® and its terms and privacy statements apply. Requires compatible iPhone® and data plan rates apply. Apple CarPlay, Siri, iPhone and Apple Music are trademarks of Apple, Inc., registered in the U.S. and other countries. ²Vehicle user interface is a product of Google and its terms and privacy statements apply. To use Android Auto on your car display, you'll need an Android phone running Android 6 or higher, an active data plan and the Android Auto app. Google, Android and Android Auto are trademarks of Google LLC. ³Functionality is subject to limitations and varies by vehicle, infotainment system and location. Select service plan required. Certain Alexa Skills require account linking to use. Amazon, Alexa and all related marks are trademarks of Amazon.com, Inc., or its affiliates. See onstar.com for additional details. ⁴Safety or driver-assistance features are no substitute for the driver's responsibility to operate the vehicle in a safe manner. Read the vehicle Owner's Manual for important feature limitations and information.



REIMAGINE WHAT A COMPACT SUV HAS TO OFFER

Next-level driver comfort and available tech elevate your driving experience.

TERRAIN SLE AND SLT

- GMC Pro Safety¹
- Traction Select System
- Fold-Flat Seats
- Wireless Apple CarPlay® Compatibility²
- Wireless Android Auto Compatibility³
- Terrain Pro Safety Plus⁴ Is Available
- Heated Front Seats and Heated Steering Wheel Are Available
- High Definition Rear Vision Camera⁵ Is Available



¹GMC Pro Safety: Automatic Emergency Braking, Lane Keep Assist with Lane Departure Warning, Forward Collision Alert, Front Pedestrian Braking, Following Distance Indicator and IntelliBeam. Safety or driver-assistance features are no substitute for the driver's responsibility to operate the vehicle in a safe manner. Read the vehicle Owner's Manual for important feature limitations and information. ²Vehicle user interface is a product of Apple® and its terms and privacy statements apply. Requires compatible iPhone® and data plan rates apply. Apple CarPlay, Siri, iPhone and Apple Music are trademarks of Apple, Inc., registered in the U.S. and other countries. ³Vehicle user interface is a product of Google and its terms and privacy statements apply. To use Android Auto on your car display, you'll need an Android phone running Android 6 or higher, an active data plan and the Android Auto app. Google, Android and Android Auto are trademarks of Google LLC. ⁴Terrain Pro Safety Plus: Automatic Emergency Braking, Lane Keep Assist with Lane Departure Warning, Forward Collision Alert, Front Pedestrian Braking, Following Distance Indicator, IntelliBeam, Rear Park Assist, Safety Alert Seat and Adaptive Cruise Control. Safety or driver-assistance features are no substitute for the driver's responsibility to operate the vehicle in a safe manner. Read the vehicle Owner's Manual for important feature limitations and information. ⁵Safety or driver-assistance features are no substitute for the driver's responsibility to operate the vehicle in a safe manner. Read the vehicle Owner's Manual for important feature limitations and information.



STAY CONNECTED WITH WHERE YOU'RE HEADED NEXT



¹Go to my.gmc.com/learnabout/bluetooth to find out which phones are compatible with the vehicle. Full Bluetooth feature functionality varies by device, model and software version.

²Functionality is subject to limitations and varies by vehicle, infotainment system and location. Select service plan required. Certain Alexa Skills require account linking to use. Amazon, Alexa and all related marks are trademarks of Amazon.com, Inc., or its affiliates. See onstar.com for additional details. ³Connected Navigation and real-time Points of Interest (POI) only available on properly equipped vehicles. Requires paid plan or trial. Map coverage available in the U.S., Puerto Rico and Canada. See onstar.com for details and limitations. ⁴Service varies with conditions and location. Requires active service plan and paid AT&T[®] data plan. See onstar.com for details and limitations. ⁵Not compatible with all devices.



Terrain keeps you and your companions connected, informed and entertained.

- Bluetooth^{®1} Connectivity
- Head-Up Display Is Available
- Amazon Alexa Built-in² Is Available

- Connected Navigation³ With Real-Time Updates on Traffic, Road Closures and Points of Interest Is Available
- Wi-Fi[®] Hotspot⁴ Is Available
- Up to Six USB Ports⁵ Are Available



MAKE EVERY ROAD A ROAD WELL-TRAVELED

TERRAIN OFFERS:

- Smooth-Shifting 9-Speed Automatic Transmission
- Traction Select System Allows You to Make Real-Time Adjustments for Optimal Capability as Driving Conditions Change
- Snow Mode, Included on FWD Models, Lessens the Chance of Wheel Slippage in Low-Traction Driving Conditions
- Off-Road Mode Adjusts the AWD System, Traction Control and Stability Control to Improve Traction and Driving Dynamics on Dirt, Gravel or Sand
- FWD Mode Optimizes Fuel Economy¹ in Everyday Driving Conditions
- Terrain Denali Features a Premium Suspension With Enhanced Shock Control to Help Provide a Refined Ride on Rough Roads



¹EPA-estimated mpg: 24 city/29 highway (FWD); 24 city/28 highway (AWD).





ALL DOWN



SECOND ROW DOWN



BACK-LEFT SEAT DOWN

Terrain comfortably accommodates up to five people and easily allows you to maximize cargo space.

- Fold-Flat Front-Passenger Seat
- 60/40 Split-Folding Second-Row Seats

- Fold-Flat Seats Accommodate Objects up to 8 Feet Long¹

¹Cargo and load capacity limited by weight and distribution.





KEEP YOUR CONNECTIONS STRONG

Three years of the OnStar® and Connected Services Premium Plan¹ are included on select Terrain models. With this plan, eligible vehicles² can enjoy the added peace of mind of the OnStar Safety & Security Plan³ and the complete suite of available connectivity features included in the Connected Vehicle Plan.⁴

ONSTAR AND CONNECTED SERVICES PREMIUM PLAN INCLUDES:

- In-Vehicle App⁵ Access
- In-Vehicle Wi-Fi® Hotspot Data⁶
- OnStar Guardian™ app⁷
- myGMC Mobile App⁸
- Automatic Crash Response⁹
- Emergency Services
- Crisis Assist
- Roadside Assistance¹⁰
- Stolen Vehicle Assistance¹¹
- Alexa Built-in¹²

¹Connected vehicle services vary by vehicle model and require active service plan, working electrical system, cell reception and GPS signal. OnStar links to emergency services. See onstar.com for details and limitations. ²Required on certain vehicles built after June 2022, and standard on certain vehicles built after August 31, 2022. ³OnStar plan, working electrical system, cell reception and GPS signal required. OnStar links to emergency services. See onstar.com for details and limitations. ⁴Connected Vehicle Plan does not include emergency or security services. Service varies with conditions and location. Data plans provided by AT&T®. See onstar.com for details and limitations. ⁵Available on select GM vehicles with compatible hardware. Third-party trademarks are the property of their respective third-party owners and used under agreement. Requires active service plan and paid AT&T vehicle data plan. ⁶Service varies with conditions and location. Requires active service plan and paid AT&T data plan. See onstar.com for details and limitations. ⁷U.S. and Canada only. Available on select Apple® and Android devices. Mobile Crash Response services are intended for use in vehicles only and can connect automatically on Android devices only. Service coverage varies with conditions and location. Service availability, features and functionality vary by device and software version. Device permissions are required for app to operate properly. OnStar links to emergency services. Device and app may not transmit all crash data. See onstar.com for details and limitations. ⁸Available on select Apple® and Android™ devices. Service availability, features and functionality vary by vehicle, device and the plan you are enrolled in. Terms apply. Device data connection required. See onstar.com for details and limitations. ⁹Automatic Crash Response may not transmit all crash data. ¹⁰Roadside services provided by Allstate Roadside Services for vehicles only. Limitations and restrictions apply. ¹¹Stolen Vehicle Assistance requires armed GM factory-installed theft-deterrent system, contact method on file and enrollment to receive alerts. Additional messaging and data rates may apply. Services are intended to assist with vehicle recovery and do not prevent theft or protect against damage or loss. ¹²Functionality is subject to limitations and varies by vehicle, infotainment system and location. Select service plan required. Certain Alexa Skills require account linking to use. Amazon, Alexa and all related marks are trademarks of Amazon.com, Inc., or its affiliates. See onstar.com for additional details.



HELP WHEN YOU NEED IT

With 3 years¹ of OnStar Safety and Security, you'll have added peace of mind knowing an Emergency-Certified Advisor² is ready to help. Whether it's a crash, a vehicle theft or an emergency situation, help is available 24/7.

The Safety & Security Plan³ includes the OnStar Guardian app⁴, which lets you access the key OnStar safety services you depend on right from your phone. Help in a crash, assistance with a flat tire and more are available through your smartphone. Best of all, you can share OnStar Guardian with up to seven of your loved ones at no additional cost.

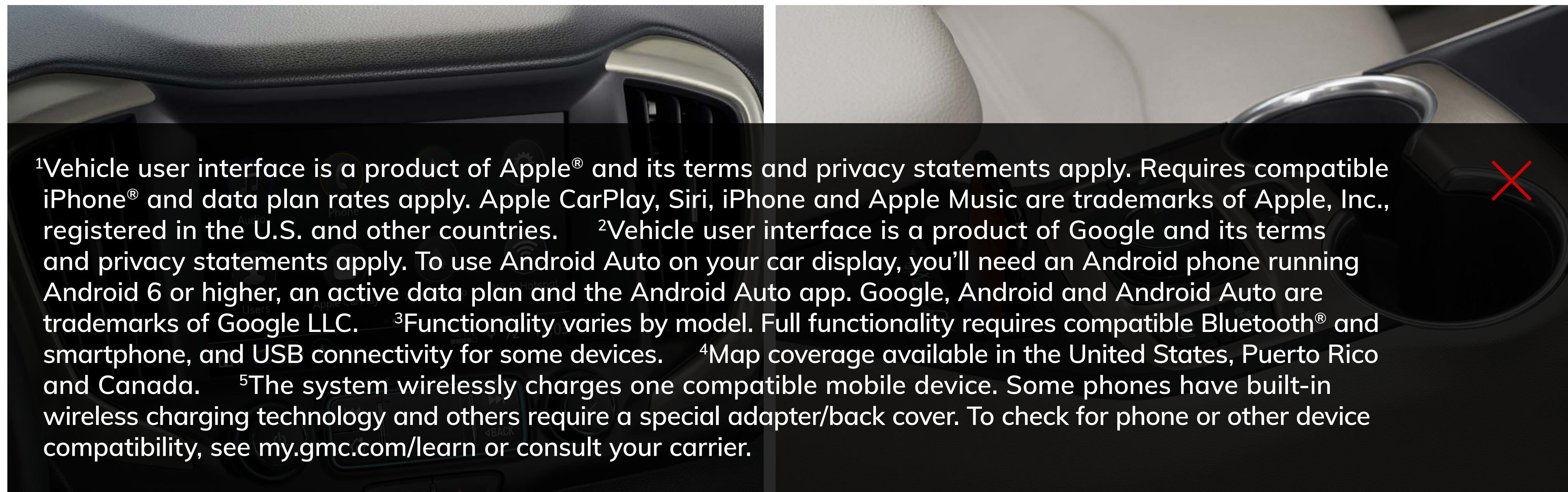


¹Required on certain vehicles built after June 2022, and standard on certain vehicles built after August 31, 2022. ²OnStar Emergency Advisors are certified by the International Academies of Emergency Dispatch. ³OnStar plan, working electrical system, cell reception and GPS signal required. OnStar links to emergency services. Not all vehicles may transmit all crash data. See onstar.com for details and limitations. ⁴U.S. and Canada only. Available on select Apple® and Android devices. Mobile Crash Response services are intended for use in vehicles only and can connect automatically on Android devices only. Service coverage varies with conditions and location. Service availability, features and functionality vary by device and software version. Device permissions are required for app to operate properly. OnStar links to emergency services. Device and app may not transmit all crash data. See onstar.com for details and limitations. GMC Acadia shown.



STAY IN COMMAND WHEREVER THE ACTION LEADS

- Wireless Apple CarPlay® Compatibility¹
- Wireless Android Auto Compatibility²
- GMC Infotainment System³ With Navigation⁴ Is Available
- Bose Premium Seven-Speaker Audio System Is Available
- Wireless Charging⁵ Is Available



¹Vehicle user interface is a product of Apple® and its terms and privacy statements apply. Requires compatible iPhone® and data plan rates apply. Apple CarPlay, Siri, iPhone and Apple Music are trademarks of Apple, Inc., registered in the U.S. and other countries. ²Vehicle user interface is a product of Google and its terms and privacy statements apply. To use Android Auto on your car display, you'll need an Android phone running Android 6 or higher, an active data plan and the Android Auto app. Google, Android and Android Auto are trademarks of Google LLC. ³Functionality varies by model. Full functionality requires compatible Bluetooth® and smartphone, and USB connectivity for some devices. ⁴Map coverage available in the United States, Puerto Rico and Canada. ⁵The system wirelessly charges one compatible mobile device. Some phones have built-in wireless charging technology and others require a special adapter/back cover. To check for phone or other device compatibility, see my.gmc.com/learn or consult your carrier.



EXPLORE MORE, ALEXA'S ON BOARD

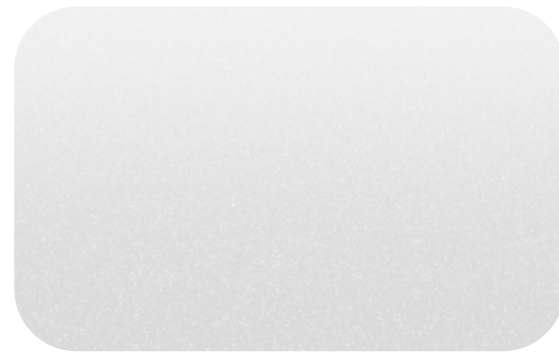
Alexa functionality is integrated into your GMC Infotainment System.¹ With available Amazon Alexa Built-in,² you can ask Alexa to stream your favorite music services such as Spotify^{®3} or Amazon Music, get directions, make calls, change your radio station and get routes to the nearest dealership—on the go. Alexa can also make shopping lists, play and resume audiobooks and get the score to last night's game.

¹Functionality varies by model. Full functionality requires compatible Bluetooth[®] and smartphone, and USB connectivity for some devices. ²Functionality is subject to limitations and varies by vehicle, infotainment system and location. Select service plan required. Certain Alexa Skills require account linking to use. Amazon, Alexa, Amazon Music and all related marks are trademarks of Amazon.com, Inc., or its affiliates. See onstar.com for additional details. ³Spotify app requires active Spotify account. Visit spotify.com/auto on your smartphone, tablet or computer for terms and to set up an account. Available on select model year 2018 and newer infotainment systems with compatible hardware. Select service plan required.





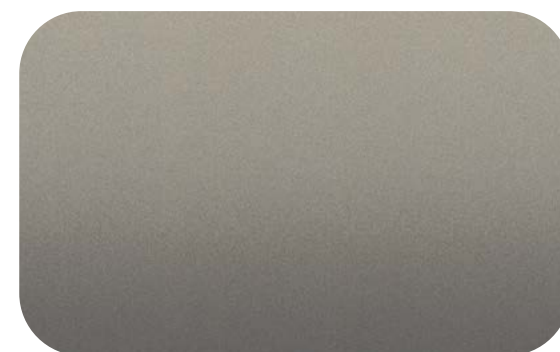
FIND YOUR TRUE COLORS



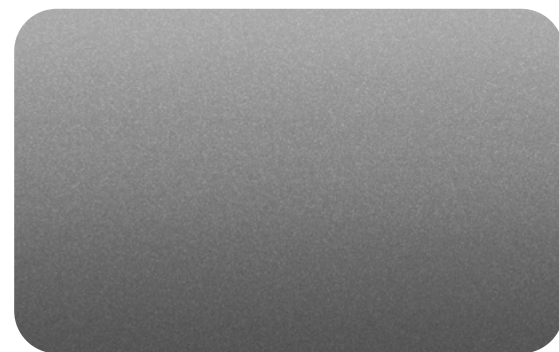
SUMMIT
WHITE



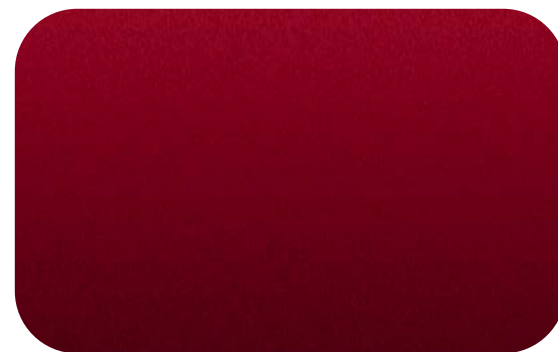
WHITE FROST
TRICOAT^{1,2}



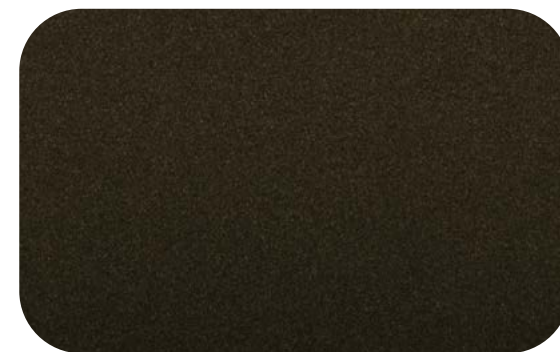
DESERT SAND
METALLIC^{1,3}



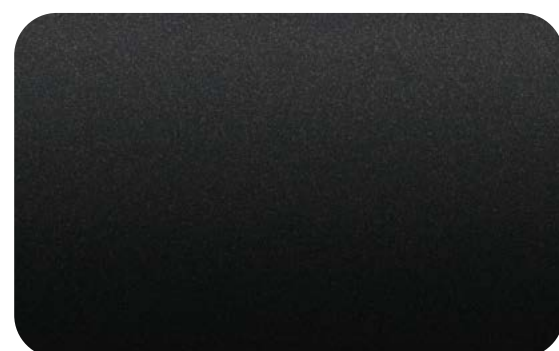
STERLING
METALLIC¹



VOLCANIC RED
TINTCOAT¹




DEEP BRONZE
METALLIC^{1,4}



EBONY TWILIGHT
METALLIC¹



MARINE
METALLIC^{1,5}


¹Extra-cost color.
²Not available on SLE or Elevation Edition.
³Only available on Elevation Edition or AT4.
⁴Only available on Denali.
⁵Not available on AT4.

